

# Hellenbrand®

## ProMate® 6.0

WATER CONDITIONING SYSTEM

### A Premium Water Conditioning System



Save on Energy  
with Soft Water



**Achieve Aqualibrium.™**



Hellenbrand treated water is in perfect balance and harmony with our lives, our homes and the environment. A Hellenbrand home enjoys water that brings health and vitality to your family. It's water the way nature intended, free of unwanted minerals.

Our ProMate 6.0 Series of water softeners are designed with that goal in mind. Providing you with proven technology and unmatched performance. The ProMate 6.0 Series softens water naturally – resulting in water that's better for your hair, skin and nails, while gentler on household pipes, appliances and fixtures. And the ProMate 6.0 Series is specifically designed to use less energy and require less salt than other competitive brands.

With over 200 years of combined experience in the water conditioning industry, Hellenbrand is the first family of water treatment.

Achieve water in perfect balance and harmony. Achieve Aqualibrium with Hellenbrand.

## ProMate 6.0: Elegant Simplicity, Unparalleled Performance

### Superior Flow Technology

Hellenbrand's unique technology consists of a distribution plate that has 56% more surface area on 10" diameter systems than standard systems with a cone type distributor, and runs the full width of the tank diameter for significantly improved performance.

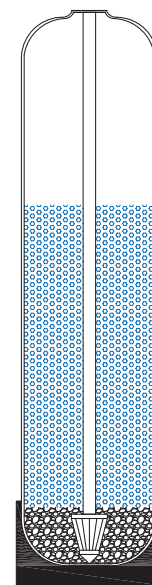
- > Improved resin bed expansion in backwash provides better cleaning of the resin bed.
- > Less water is required to regenerate.

### Premium 10% Resin

We use premium 10% crosslinked resin vs. most of our competitors that use 8% or less.

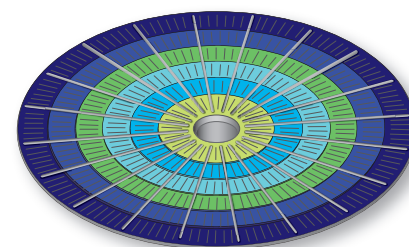
### What does this mean?

- > 10% resin is used for a lot of commercial applications, because it is stronger and lasts longer. It resists mushing and jelling from chemicals and physical breakdown.
- > Damaged resin means you will use more salt and waste more water when recharging the resin for softening.
- > You also have better pressure over the life of your softener.



Standard Tank

Array (starting at center)	% Increase of open area with respect to Array No.1
Array No. 1	
Array No. 2	100%
Array No. 3	200%
Array No. 4	300%
Array No. 5	400%
Array No. 6	500%



Vortech™ 10" Mid-Plate

### Fewer Parts Means Fewer Problems

- > Modular Design
- > Non-Corrosive Valve Body & Internals
- > One Piece Stack Assembly
- > No Nuts, Bolts, Screws or Micro-Switches
- > Disassemble and Reassemble in Minutes



# A ProMate 6.0 Water Softener Means Better Water for Health & Home

## Help Dry Skin and Hair

Use less shampoo and conditioner. Enjoy healthier and softer skin and hair with softened water.

## Reduce Energy Costs

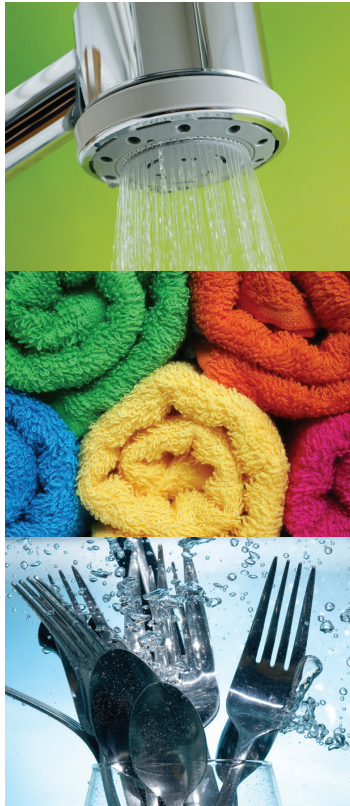
Softened water maintains the ENERGY STAR® ratings on your water heater by preventing rock like scale build-up, thus saving you significant dollars in energy costs and a much longer life for your water heater.

## Stop Discoloration and Staining

Softened water eliminates hard water stains and significantly reduces rust colored stains from iron.

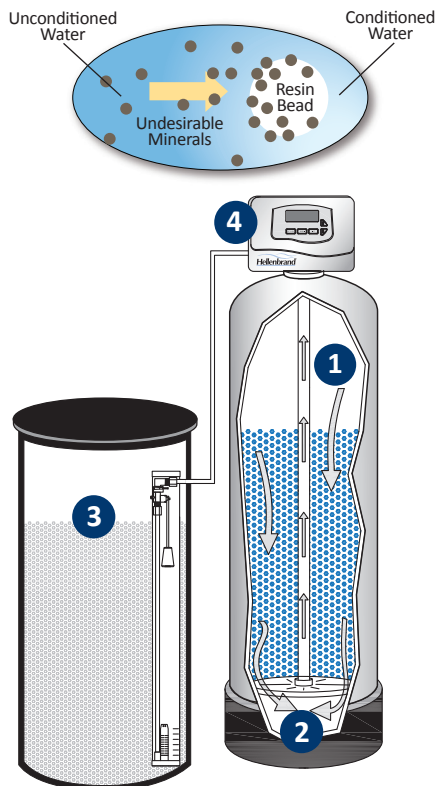
## Protect Plumbing, Appliances & Fixtures

Softened water extends the life of appliances and significantly reduces the repair costs as a result of hard water. Your faucets, showerheads and appliances will last much longer; your dishes will be cleaner and clothes will stay brighter, longer.



## How Does a ProMate 6.0 Water Softener Work?

- 1 Hard water enters your water softener and passes down through the ion exchange resin, which are charged with sodium ions. The hard water ions (calcium and magnesium) are attracted to the ion exchange resin, and an equal amount of sodium ions are bumped off into the water supply.
- 2 When the water reaches the bottom of the tank, it is softened and ready to be used in your home and business.
- 3 When the ion exchange resin is saturated with hard water minerals, it must be recharged. A salt solution flushes the calcium and magnesium off the resin and the resin is recharged with sodium. The brine solution from your brine tank is the fuel to recharge the resin with sodium.
- 4 Your ProMate control valve automatically controls this entire process, including the frequency of regeneration.



## The Hard Facts Behind Soft Water

### Better Dishwasher Performance

- > Detergent savings of up to 70% with soft water as compared to hard water.
- > Depending on the soil, hardness reduction was found to be up to 12 times more effective at soil removal than increasing the detergent dose.
- > Hardness reduction was 6 times more effective at reducing spotting and twice as effective at reducing filming as increasing detergent use.

### Brighter Clothes, Less Detergent

- > Stain removal performance increases dramatically when hardness is removed, even when the detergent dose and temperature are also lowered.
- > Softening the water will allow the use of 60% less detergent and will also save energy by lowering water temperatures, while still maintaining or improving performance.

### Improved Water Heater Efficiency

- > Gas storage tank water heaters operated on softened water maintained the original factory efficiency rating over a 15-year lifetime.
- > Hard water can result in as much as a 48% loss in water heater efficiency.
- > Tank-less water heaters operating on 26.2 grains per gallon of hardness failed to operate after 19 days of testing.
- > Softened water saves 40-57% of operating costs.

### Longer-Lasting Showerheads and Fixtures

- > Showerheads with soft water maintained a brilliant luster and full flow, and performed nearly as well throughout the study as the day they were installed.
- > Showerheads on hard water lost 75% of the flow rate in less than 18 months.

The detergent savings studies were conducted by the independent testing firm Scientific Services S/D, Inc. of New York, and the softened water benefit studies were conducted by the Battelle Memorial Institute, a non-profit international science and technologies enterprise. Both studies were funded by the Water Quality Research Foundation (WQRF).



Hellenbrand, Inc.  
404 Moravian Valley Road  
Waunakee, WI 53597  
[www.hellenbrand.com](http://www.hellenbrand.com)

©2013 Hellenbrand, Inc.

